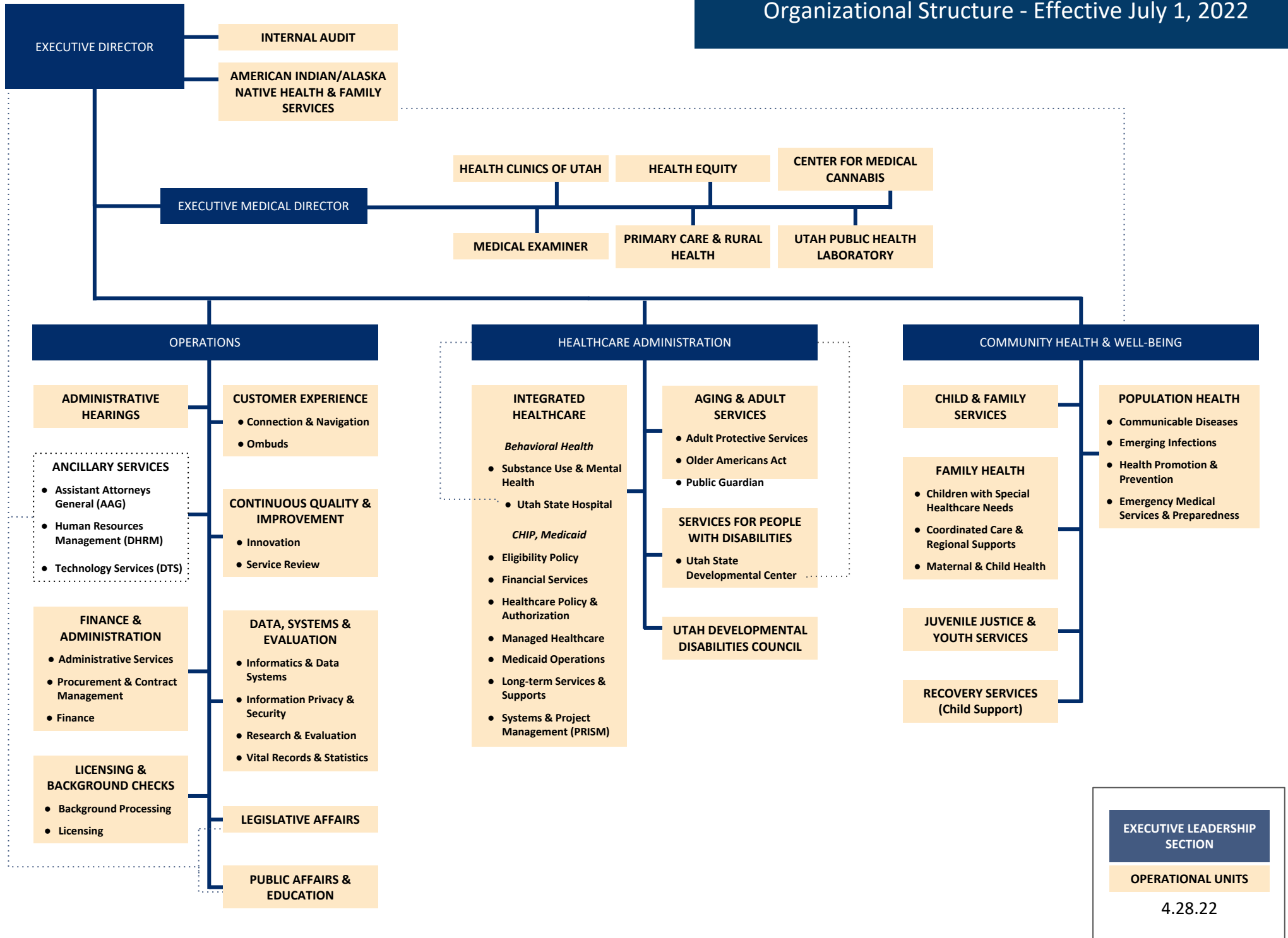


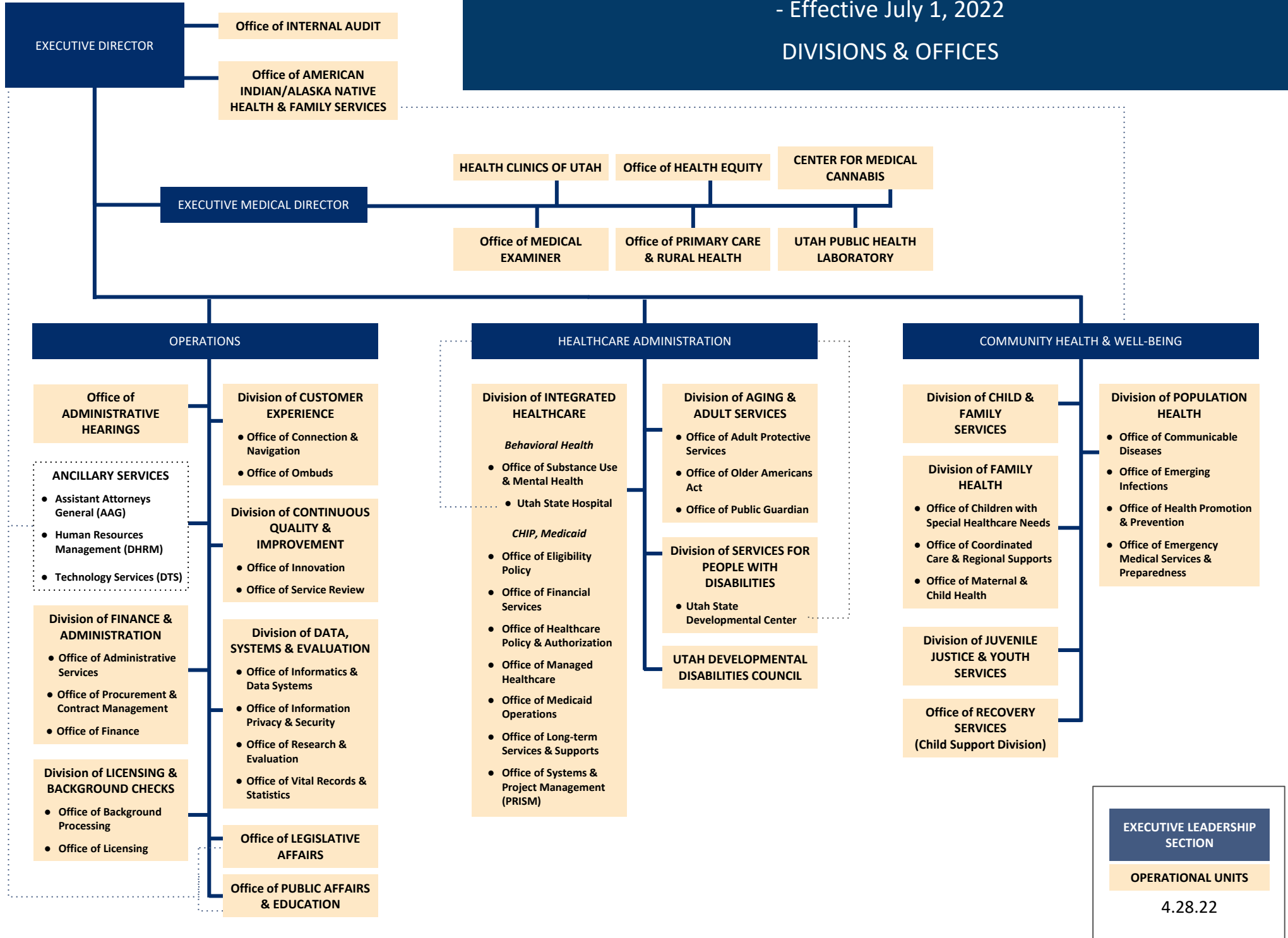
Utah Department of Health & Human Services Organizational Structure - Effective July 1, 2022



Utah Department of Health & Human Services Organizational Structure

- Effective July 1, 2022

DIVISIONS & OFFICES



EXECUTIVE LEADERSHIP SECTION

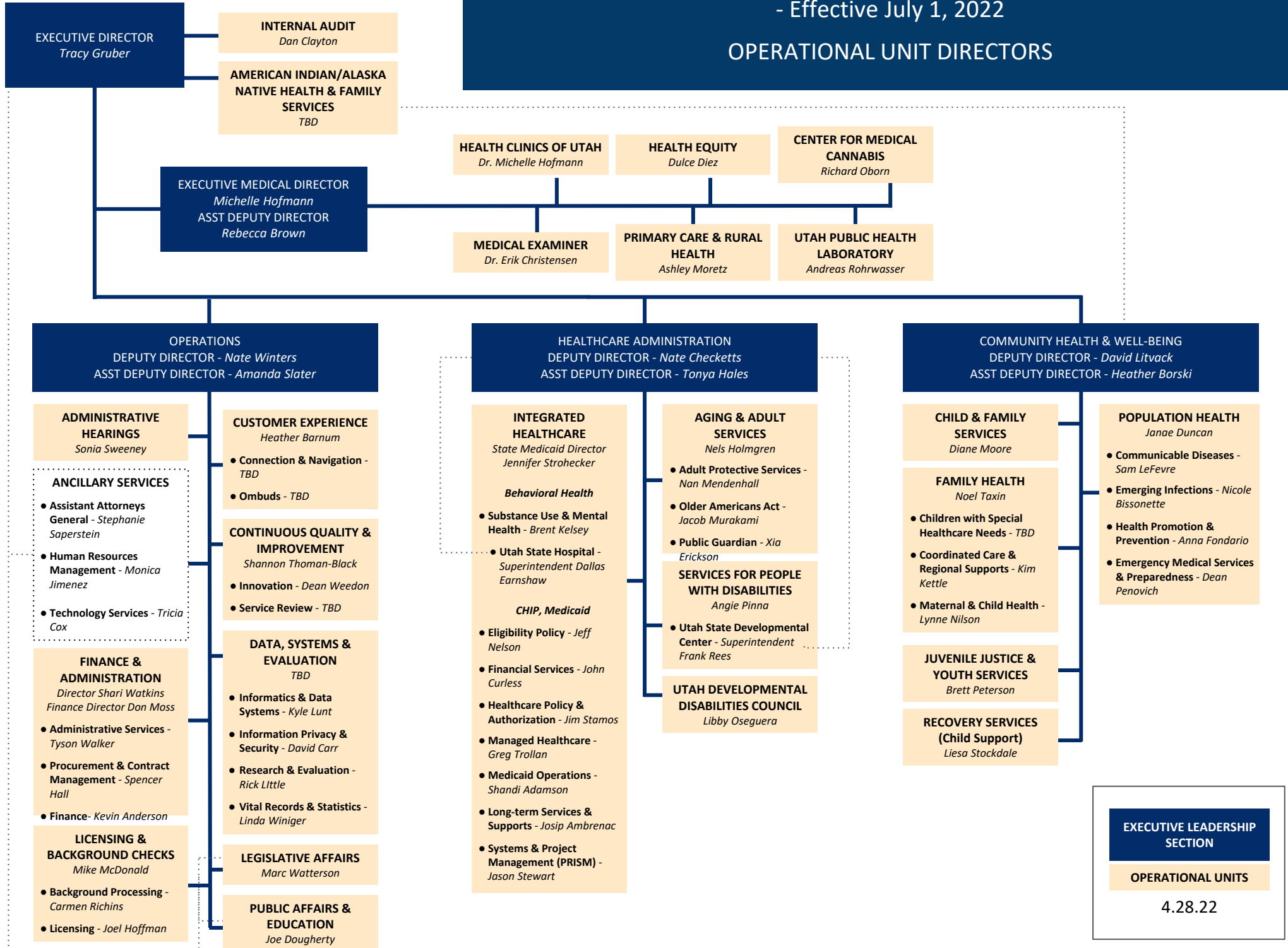
OPERATIONAL UNITS

4.28.22

Utah Department of Health & Human Services Organizational Structure

- Effective July 1, 2022

OPERATIONAL UNIT DIRECTORS



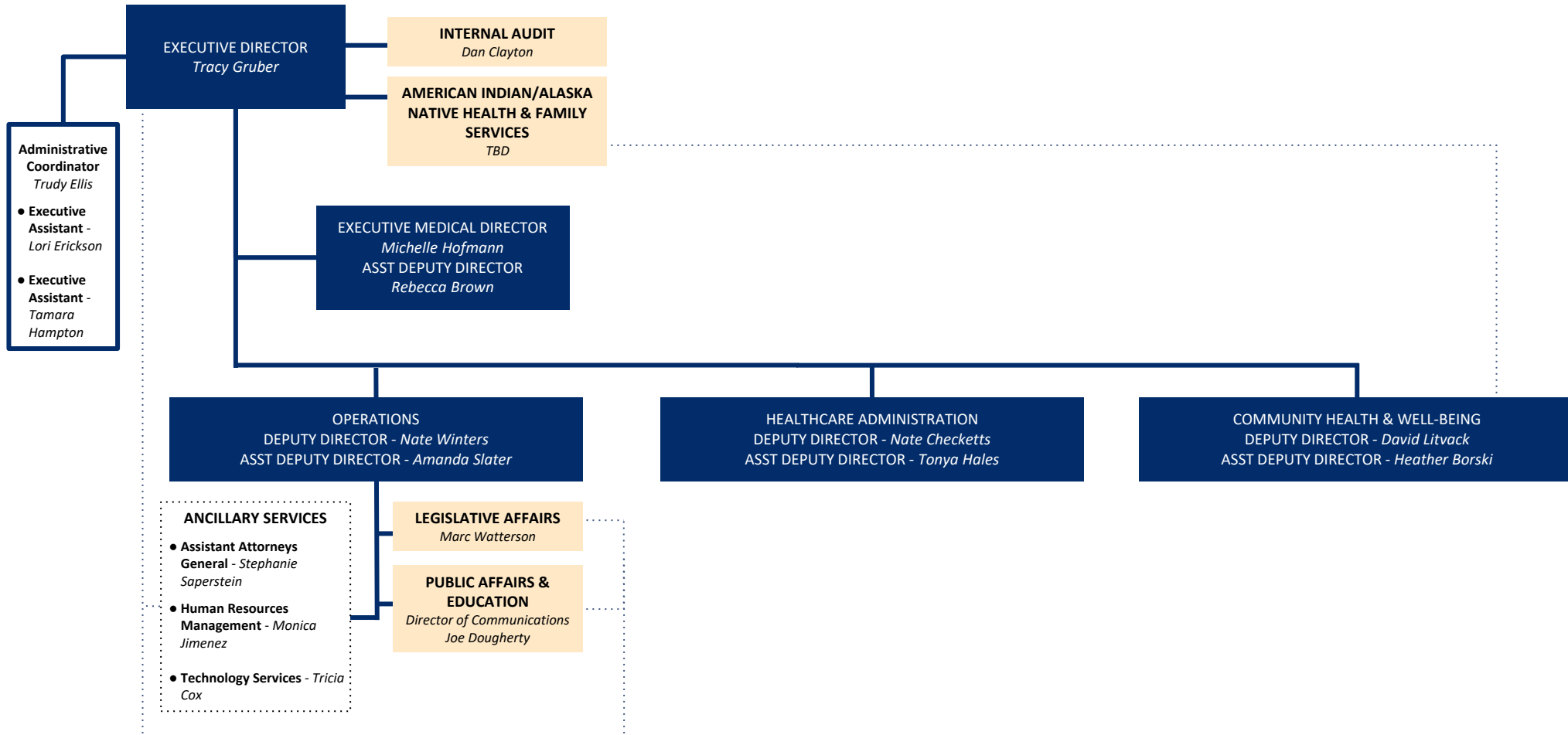
EXECUTIVE LEADERSHIP SECTION

OPERATIONAL UNITS

4.28.22

Utah Department of Health & Human Services Organizational Structure - Effective July 1, 2022

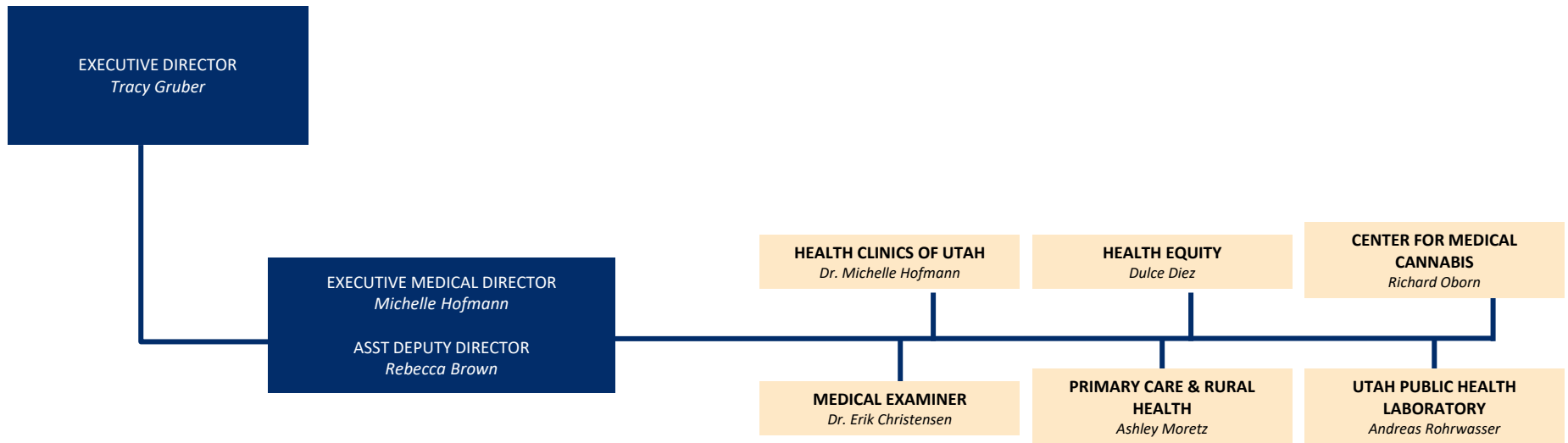
EXECUTIVE DIRECTOR SECTION



EXECUTIVE LEADERSHIP SECTION
OPERATIONAL UNITS
4.28.22

Utah Department of Health & Human Services Organizational Structure
- Effective July 1, 2022

EXECUTIVE MEDICAL DIRECTOR SECTION

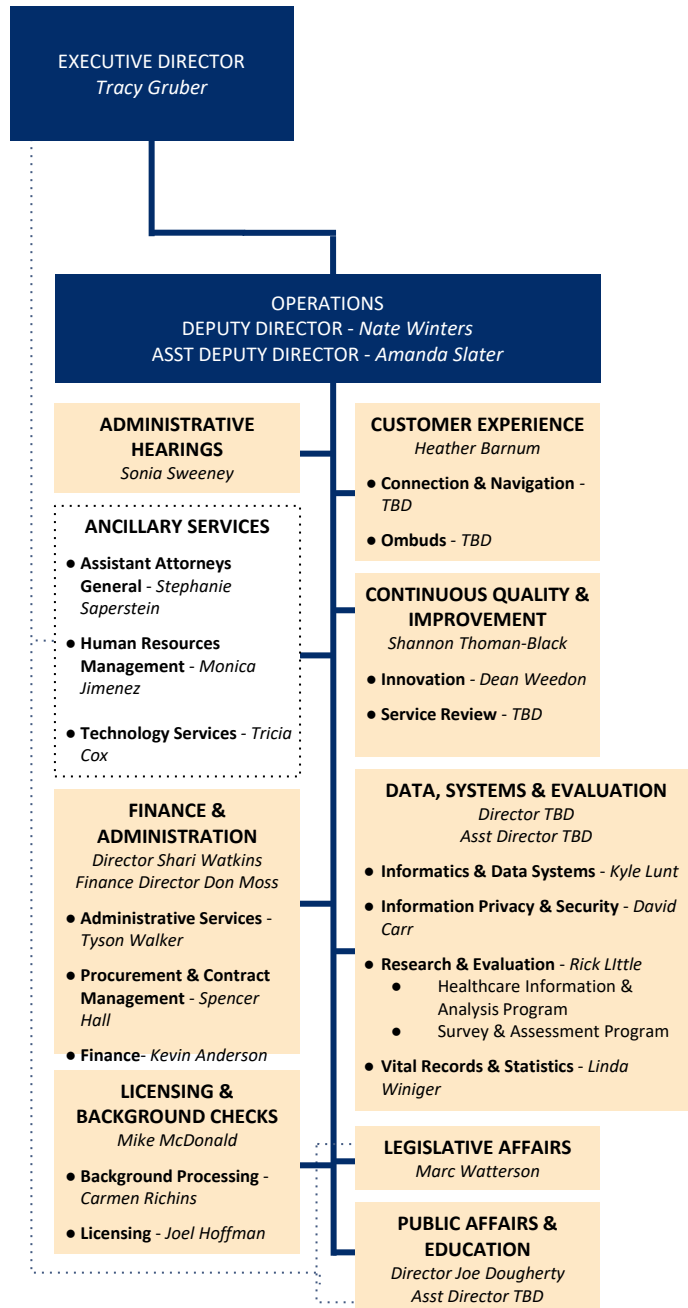


EXECUTIVE LEADERSHIP SECTION
OPERATIONAL UNITS
4.28.22

Utah Department of Health & Human Services Organizational Structure

- Effective July 1, 2022

OPERATIONS SECTION



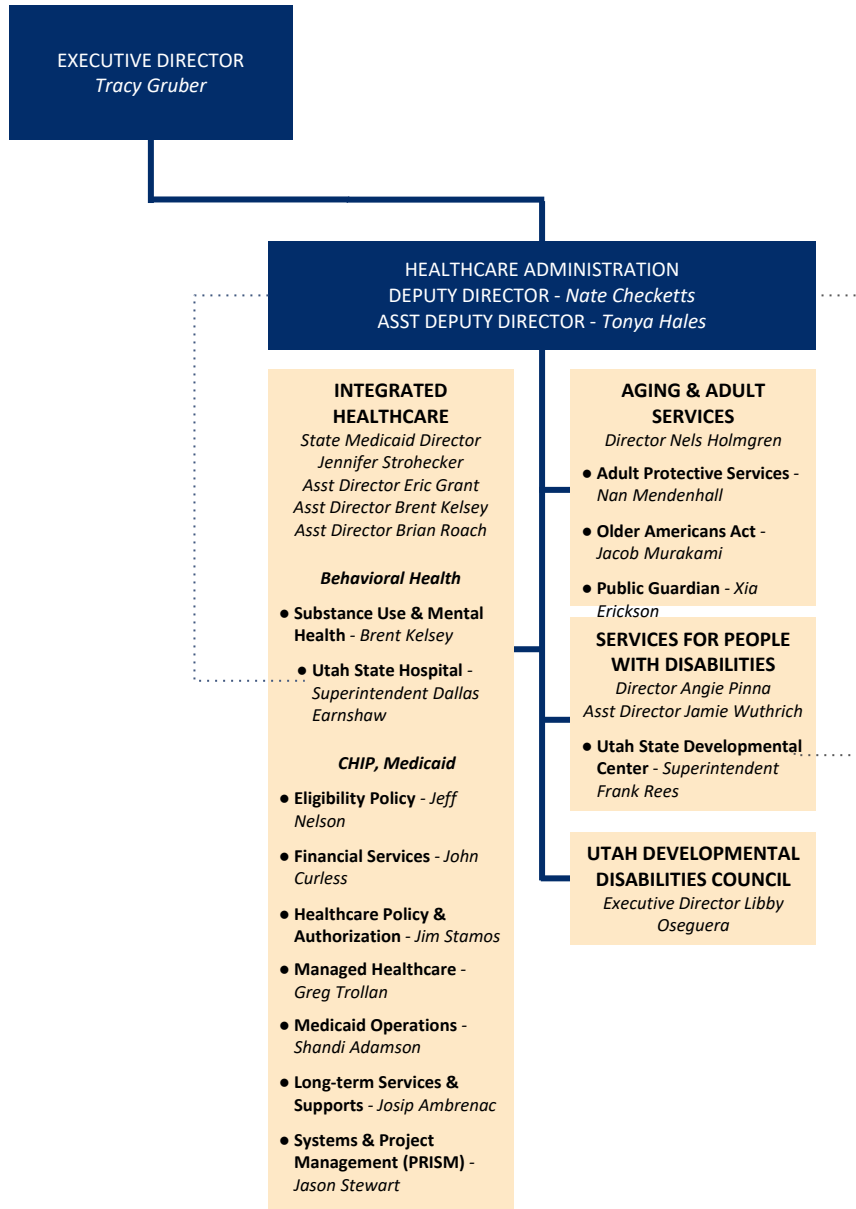
EXECUTIVE LEADERSHIP SECTION

OPERATIONAL UNITS

4.28.22

Utah Department of Health & Human Services Organizational Structure - Effective July 1, 2022

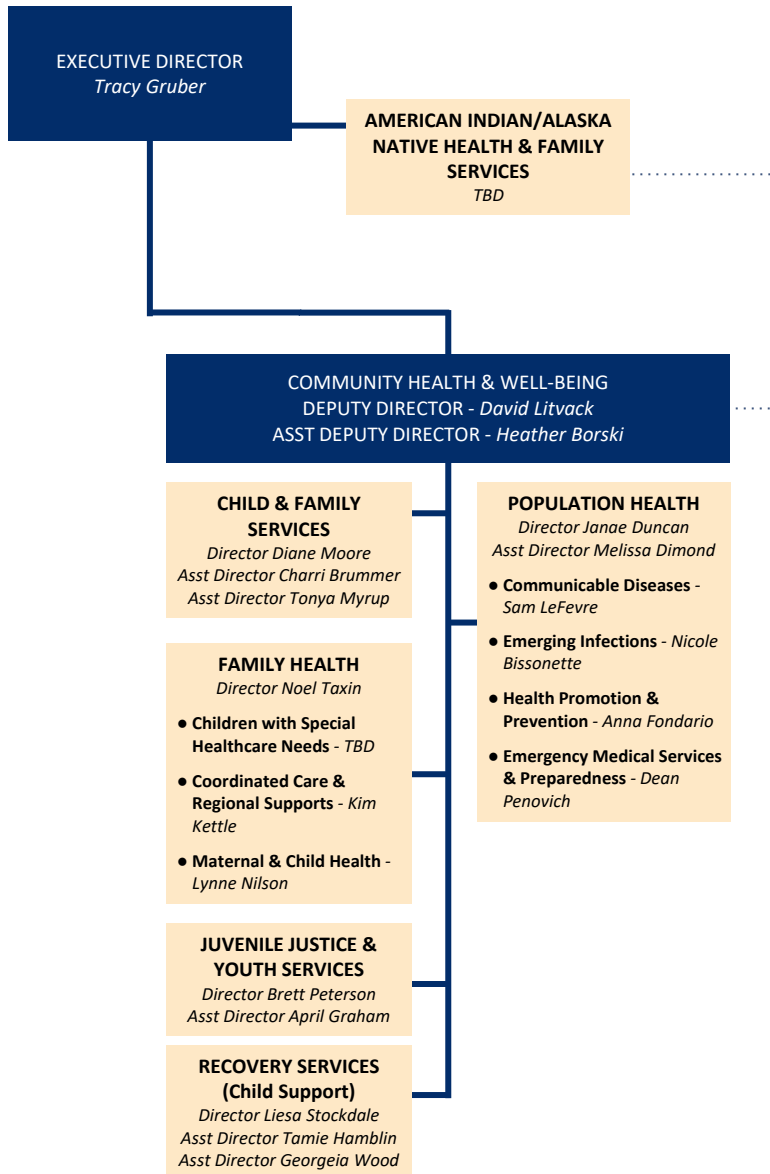
HEALTHCARE ADMINISTRATION SECTION



EXECUTIVE LEADERSHIP SECTION
OPERATIONAL UNITS
4.28.22

Utah Department of Health & Human Services Organizational Structure - Effective July 1, 2022

COMMUNITY HEALTH & WELL-BEING SECTION



EXECUTIVE LEADERSHIP
SECTION

OPERATIONAL UNITS

4.28.22